

**EBMUD:  
Water Supply & Wastewater  
Treatment in the East Bay**

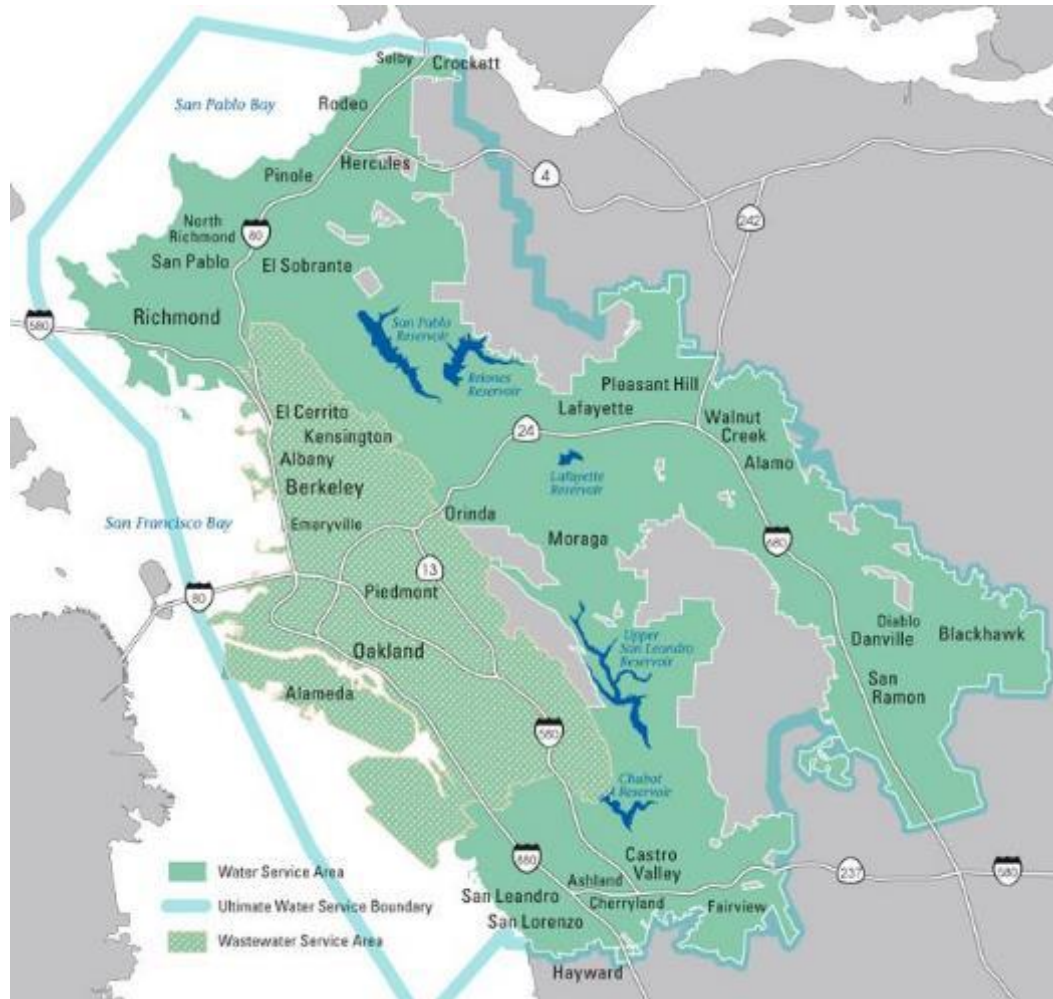
**for Oakland Shoreline Leadership Academy  
Saturday, October 23**

# Agenda



- Drinking Water
- Wastewater
- Sea Level Rise
- Water Quality
- How to Engage with EBMUD

# East Bay Municipal Utility District (EBMUD)



## BY THE NUMBERS

**2,000** Total Employees

### Drinking Water

**1.4** Million People

**332** Square Mile Area

**170** Million Gallons Per Day in 2020

### Wastewater

**740** Thousand People

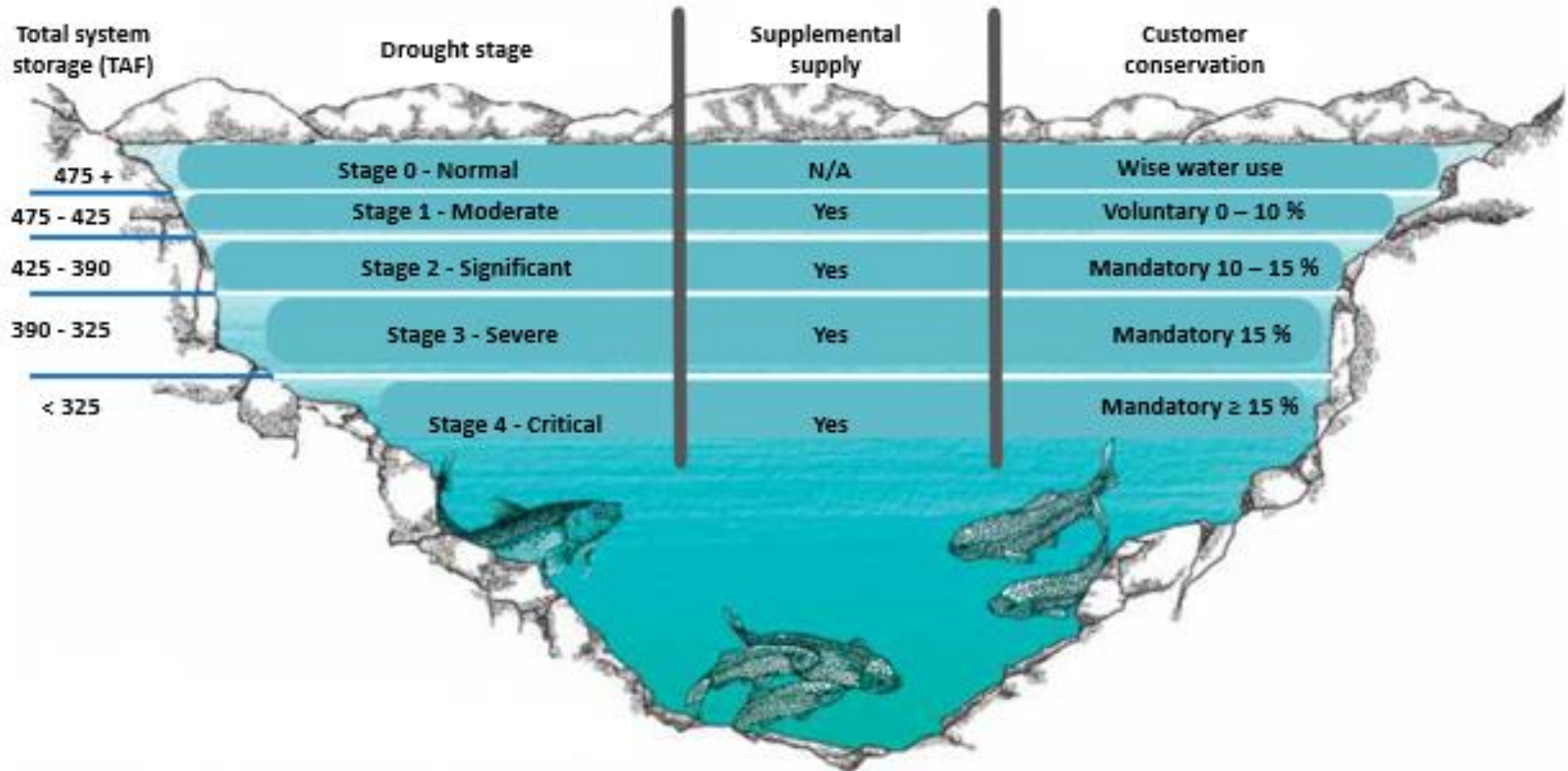
**88** Square Mile Area

**53** Million Gallons Per Day Avg



# Stage 1 Drought Declaration

## April 27

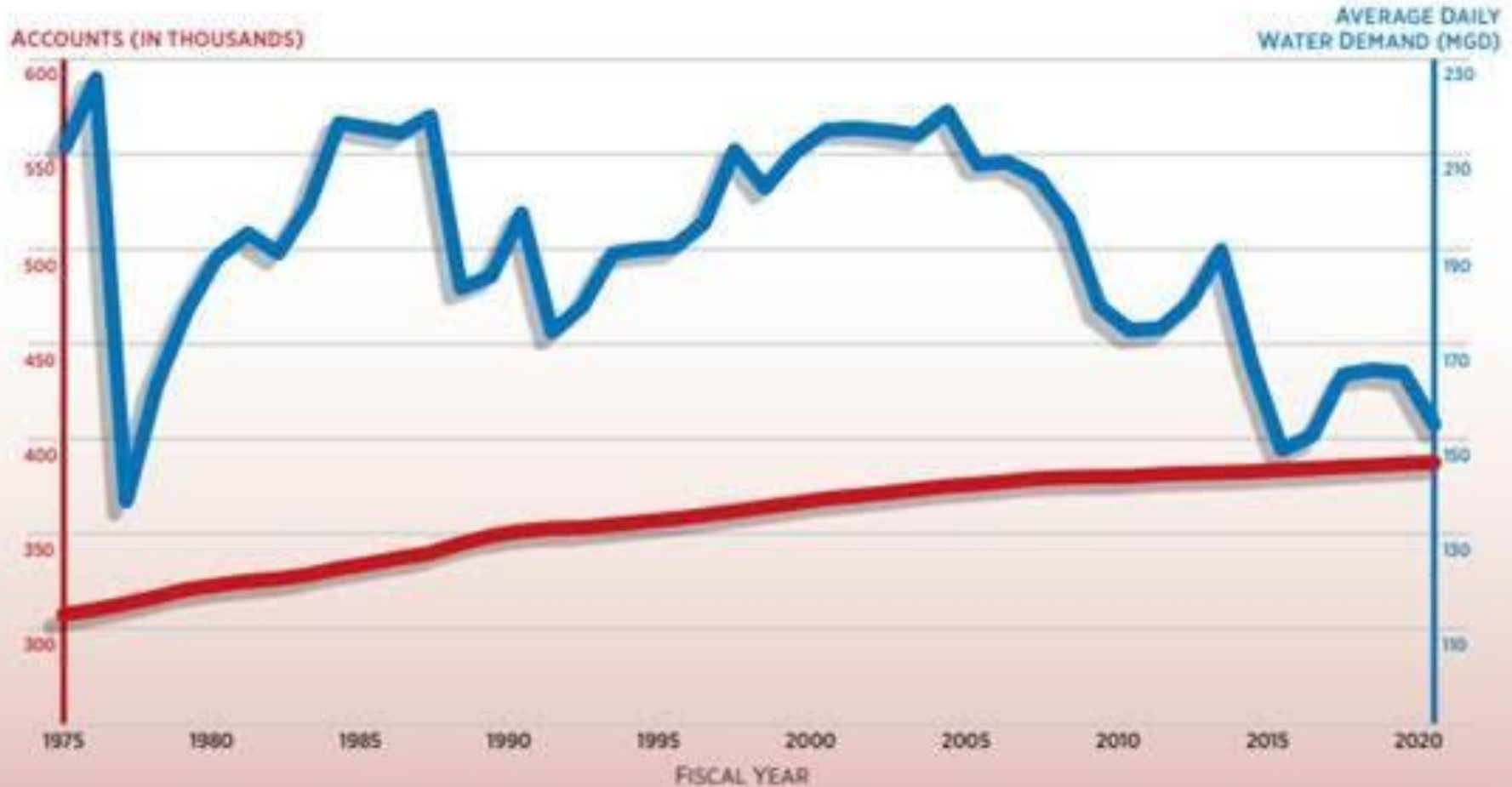


# Water demand and population growth



FIGURE 3-1

EBMUD WATER ACCOUNTS AND TOTAL DEMAND



# Water conservation



Turn Off Water When Brushing Teeth...



Install Water-Efficient Appliances



...or Doing Dishes



Identify & Fix Leaks



Take Shorter Showers & Install Low-Flow Shower Head



Home  
survey  
kit:  
[ebmud.  
com/store](http://ebmud.com/store)



# Recycled water



- Serving customers since the 1990s
- 9 million gallons per day
- Goal: 20 million by 2040
  - Phillips 66
  - Satellite plants
- Focus: large irrigators and industrial uses



# Groundwater



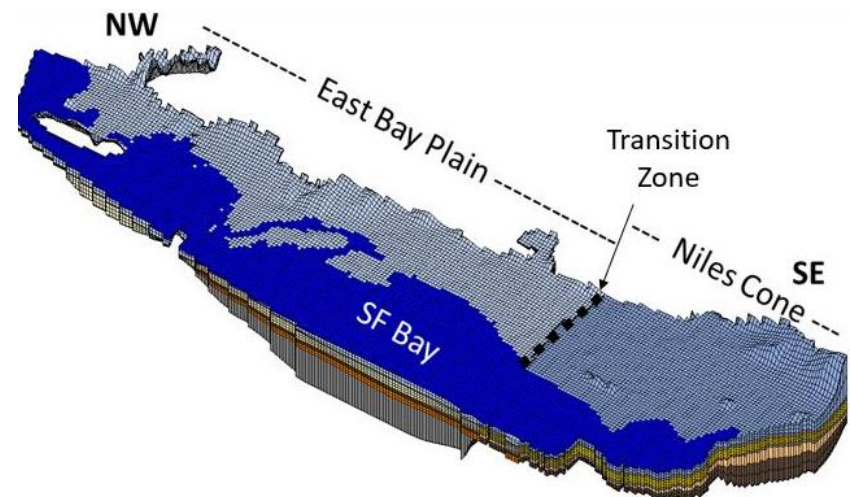
- Currently no groundwater in EBMUD water portfolio
- EBMUD is a Groundwater Sustainability Agency
  - [ebmud.com/sgma](http://ebmud.com/sgma)
  - Comments due Nov. 1

## Ongoing pilots

- Bayside: East Bay/ San Lorenzo
- DREAM: San Joaquin



DREAM aqueduct connection





# Wastewater System



## BY THE NUMBERS

**1,600** Miles of Private Sewer Laterals

**1,600** Miles of Pipe in the Collection System

**37** Miles of Interceptor & Force Main Pipe

**1** Wastewater Treatment Plant

**3** Wet Weather Facilities

**15** Pump Stations

**10** Level Monitoring Stations

**5** Overflow Structures

EBMUD

Main Wastewater Treatment Plant



# Before 1951: No Wastewater Treatment



Strawberry Creek Outfall



EBMUD Wastewater Treatment Plant

## S.F. Lays Odor to Eastbay; Anyway, It's Not Poisonous

Bay area residents—San Franciscans in particular—had better clamp clothes pins upon their noses the next time the "big smell" is wafted their way.

Because, although the State Health Department has pointed the accusing finger at Alameda and Contra Costa County industrial plants, it says at the same time there is nothing actually poisonous in the odor.

Dr. J. C. Geiger, San Francisco health officer, asked the State Department to investigate after receiving complaints from irate taxpayers who demanded elimination of the various smells.

However, Dr. Bertram P. Brown, State health director, didn't make his report specific. The smell, he knows, is caused either by hydrogen sulphide or mercaptans gases, and in the complaints he investigated, has been declared akin to:

"Old bones, oil, sulphur, rotten eggs, garbage, dead cats, sewer gas, illuminating gas, garlic, fish oil, stagnant water and ammonia."

Dr. Brown's report offering little relief, read:

"Under certain atmospheric conditions, malodorous gases emanating from industrial establishments in Alameda and Contra Costa counties apparently are carried by air currents across the bay to San Francisco in sufficient quantities to be perceptible to the sense of smell."

In the last, everyone will agree, the doctor is one hundred per cent correct.

"However, no evidence has been revealed to indicate that these gases reach San Francisco in concentrations sufficiently great to constitute a health hazard."



**PRESIDENT  
SPOON  
COUPON  
51**

This coupon and 25c, plus sales tax, entitles you to receive ONE of the President Commemorative Spoons in accordance with the terms of the Tribune's Spoon Offer. Full details in Tribune, or phone TE mplebar 6000, local 92.

**CLIP AND SAVE**

Your coupons do not have to be consecutively numbered.



# Private Sewer Lateral Program



Storm Drain

Private Sewer Lateral

Collection System

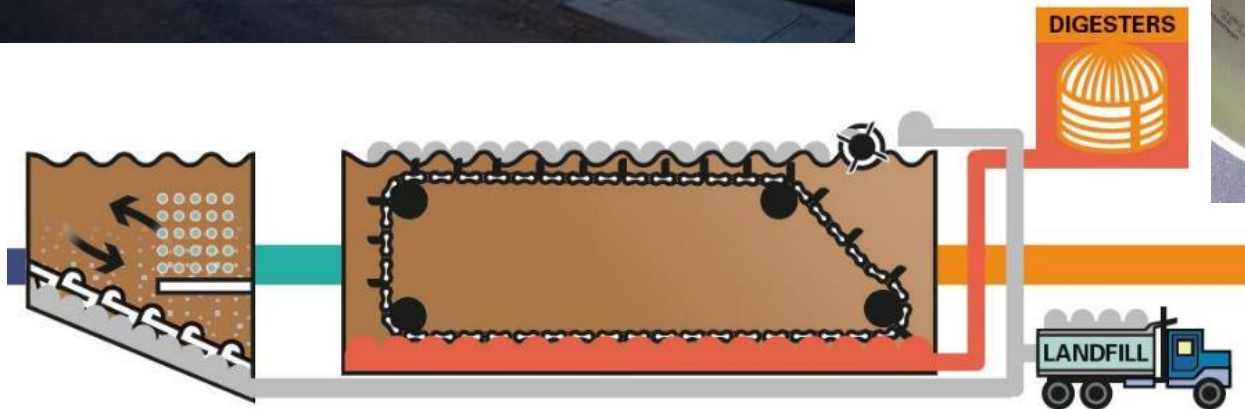


Leaky Pipes

Infil Gusher



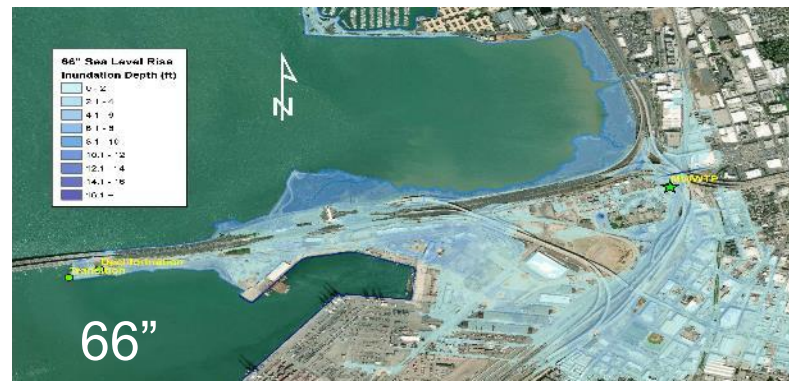
# Virtual Wastewater Tours



Dates: [ebmud.com/events](http://ebmud.com/events)

Contact: [wwtptours@ebmud.com](mailto:wwtptours@ebmud.com)

# Sea Level Rise: MWWTP



## KEY TAKEAWAYS

- 1 We are proactively planning now for sea level rise across all projects, using the Intergovernmental Panel on Climate Change's worst assumptions for planning.
- 2 Sea level rise is a regional problem, which requires a collaborative regional solution.



# Sea Level Rise: Dechlorination Facilities





# Water Quality: Our Drinking Water



- We monitor daily for more than 200 compounds throughout our system.
- We removed all known lead service lines and continue to remove lead components when found.
- We use robust corrosion control.
- Lead testing at schools: completed July 2019.
- Free lead test for homeowners or renters, one per year:  
[customerservice@ebmud.com](mailto:customerservice@ebmud.com)



# Public Engagement – How & When?



- Construction Projects

[ebmud.com/construction](http://ebmud.com/construction)

- Board Meetings

2<sup>nd</sup> & 4<sup>th</sup> Tuesdays, 1:15pm

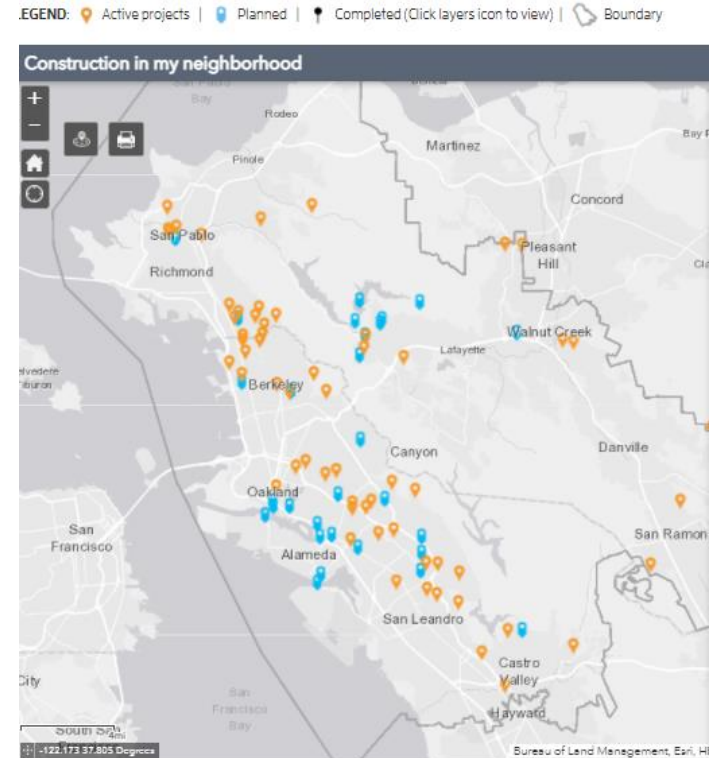
[ebmud.com/boardmeeting](http://ebmud.com/boardmeeting)

- Environmental Review

[ebmud.com/about-us/construction-and-maintenance/environmental-review-documents](http://ebmud.com/about-us/construction-and-maintenance/environmental-review-documents)

- Odor Reporting – Wastewater Plant

510-287-1522





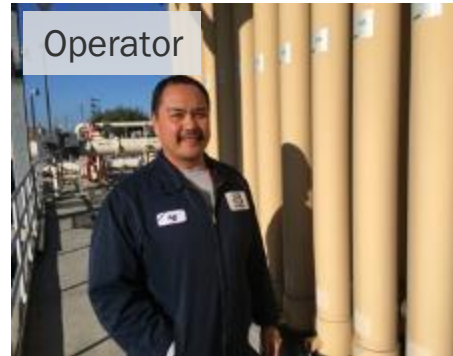
# Careers: Help Protect our Future



Engineer



Maintenance



Operator



Secretary



Network Analyst



Water Conservation



Construction



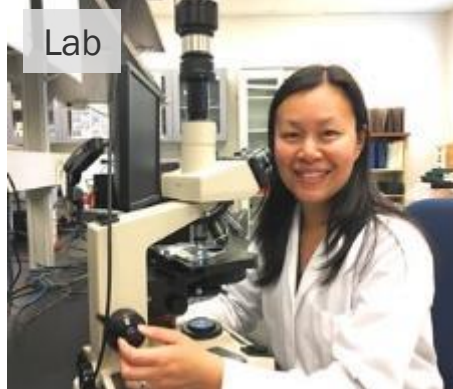
Health & Safety



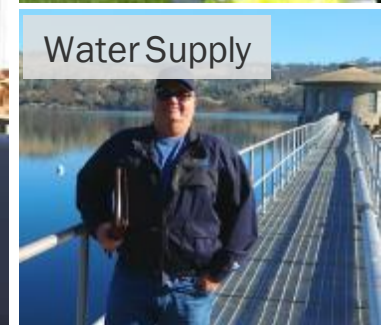
Ranger



Heavy Equipment Operator



Lab



Water Supply



A scenic landscape of rolling hills with a dirt road winding through them. The foreground is filled with dense green trees and shrubs, while the background shows more hills under a clear sky.

**Questions?**

**Ben Glickstein**

**510-287-1631**

**[ben.glickstein@ebmud.com](mailto:ben.glickstein@ebmud.com)**